



Rescue Services in Finland

Director Janne Koivukoski
HELSINKI 27th November 2012

The Ministry for internal security and migration

MINISTRY OF THE INTERIOR
Department for Rescue Services



Basic Facts

Finland

- 5,4 million inhabitants
- Geographical area: 338.000 km²
- Member of EU
- 1.200 km Schengen border with Russia



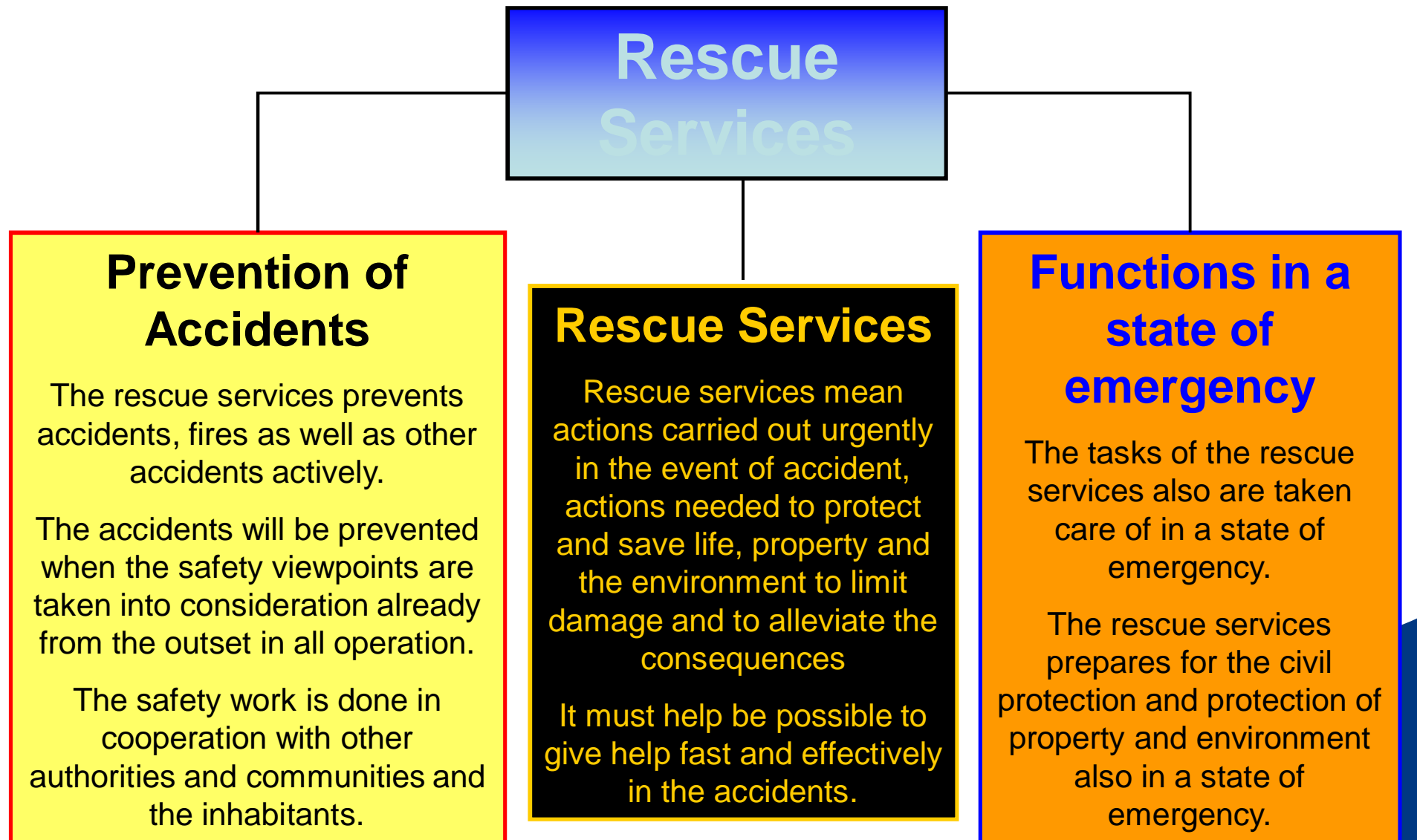


OUR MISSION


- We are responsible for our service level objectives:
 - Good safety culture
 - Fewer accidents and less damage
 - Fast and effective help in accidents and emergency conditions
 - Good cooperation




Tasks of Rescue Services



Authorities and administration of rescue services

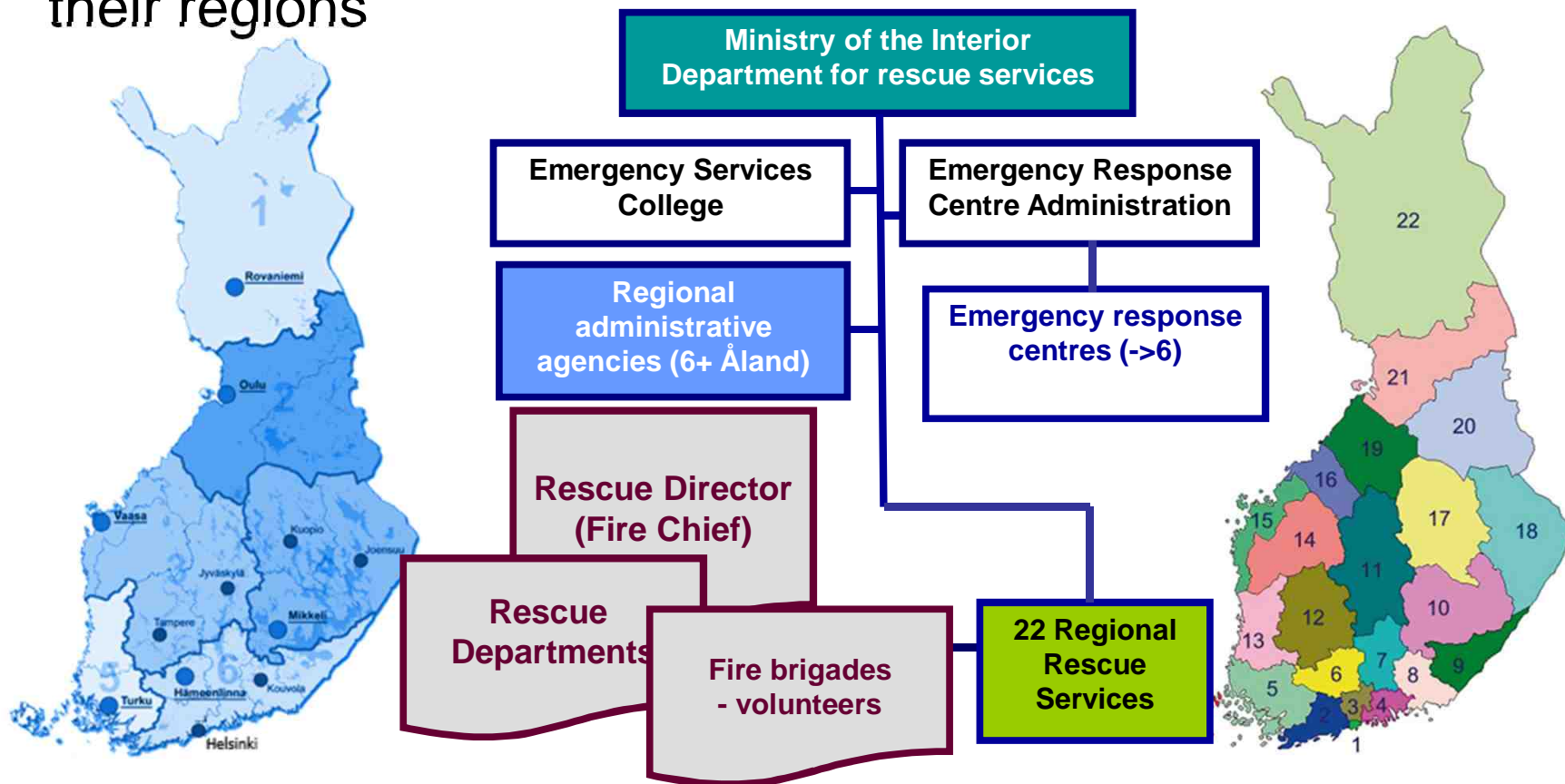
- Supreme command, control and supervision of rescue services in Finland come under the Ministry of the Interior
- 

Department for Rescue Services in the Ministry of the Interior

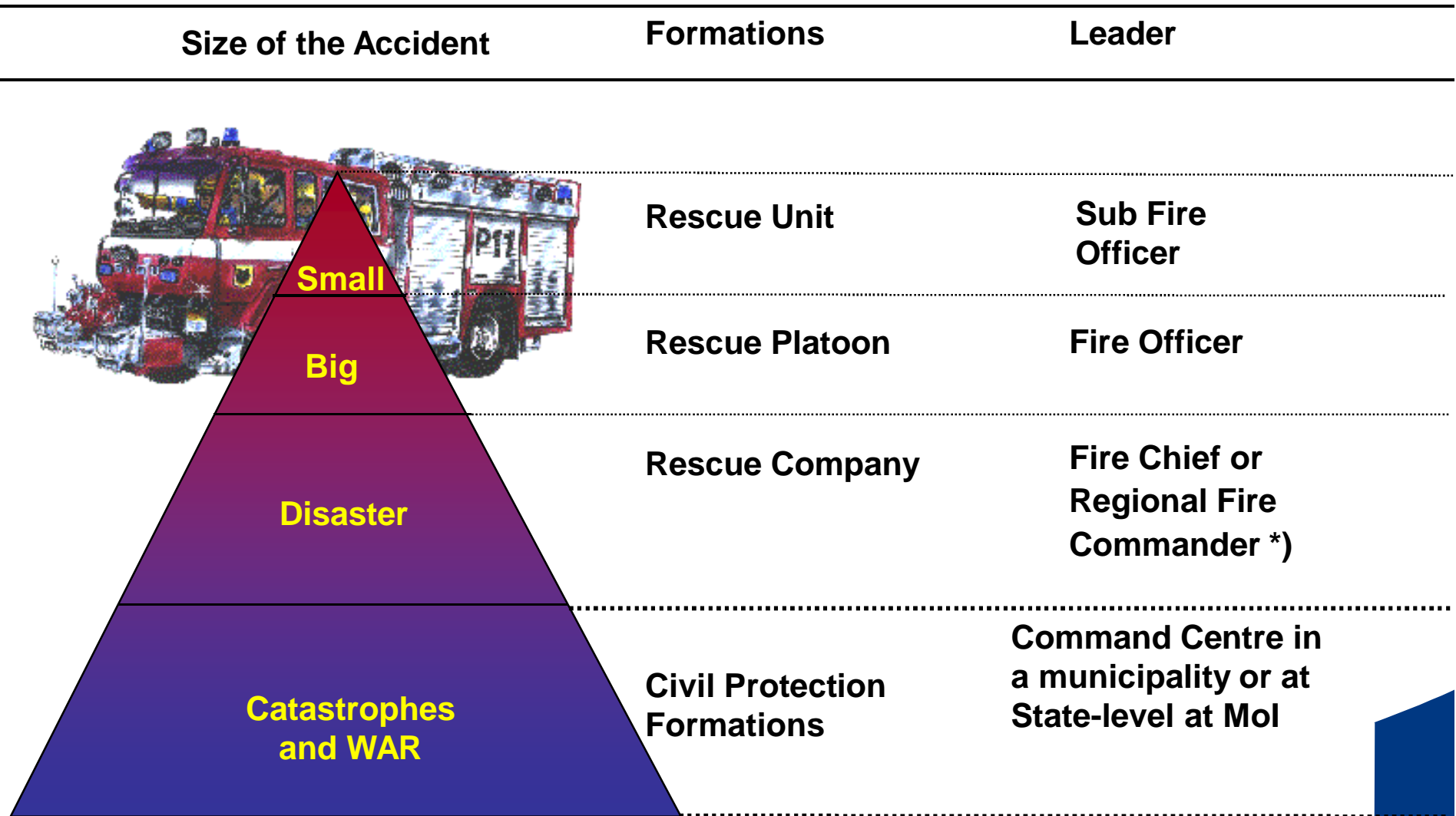
- Directs and monitors rescue services and maintains oversight of coverage and quality
 - Is in charge of the organisation and coordination of rescue services at national level
 - Is responsible for performance guidance for the
 - Emergency Response Centre Administration
 - Emergency Services College
 - Organisation: Development and Administration Unit, Rescue Services Unit, Accident Prevention Unit, International Affairs Unit, Security Network Unit
 - At local level, Regional Rescue Services are responsible for the prevention of fires and other accidents, rescue operations and civil protection as a part of municipality administration
- 

The Regional Administrative Agencies (6) control rescue services service level in their regions

Regional Rescue Services (22) are responsible for rescue services in their area



Command of Rescue Operations in Finland



*) The Department for Rescue Services at the Ministry of the Interior can give orders or nominate a new leader

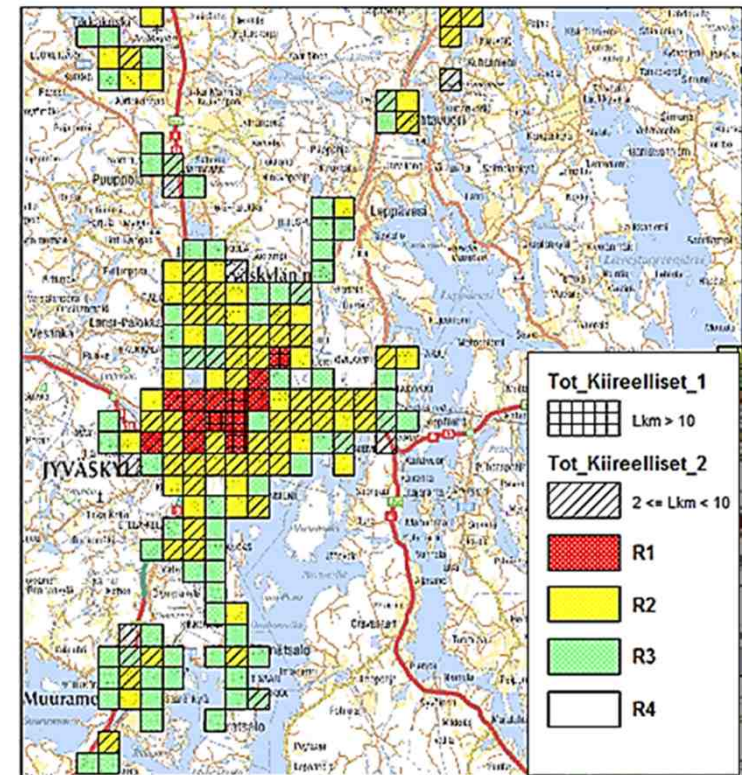
Rescue Services Level Agreement

Rescue services must be planned and implemented so that:

- Prevention of accidents is organized
- Measures required in the event of an accident or impending danger are carried out without delay and effectively

Risk assessment

- The whole country territory area is divided into risk classes. Risk classes are based on a risk level which is determined by the regression model. Regression model is based on number of inhabitants and building area.
- Regression model has been calculated according real house fires.
- Prognosis for risk level in a square 1 km x 1 km.



Risk class I Response time < 6 min for unit and 20 min for platoon
Risk class II Response time < 10 min for unit and 30 min for platoon
Risk class III Response time < 20 min for unit and 30 min for platoon
Risk class IV No response time defined

PERSONNEL IN FIRE AND RESCUES SERVICES

- 5 000 professional fire fighters
- 4 300 part-time fire fighters
- 15 000 voluntary fire fighters



A whole host of other authorities and voluntary organisations also take part in rescue services.

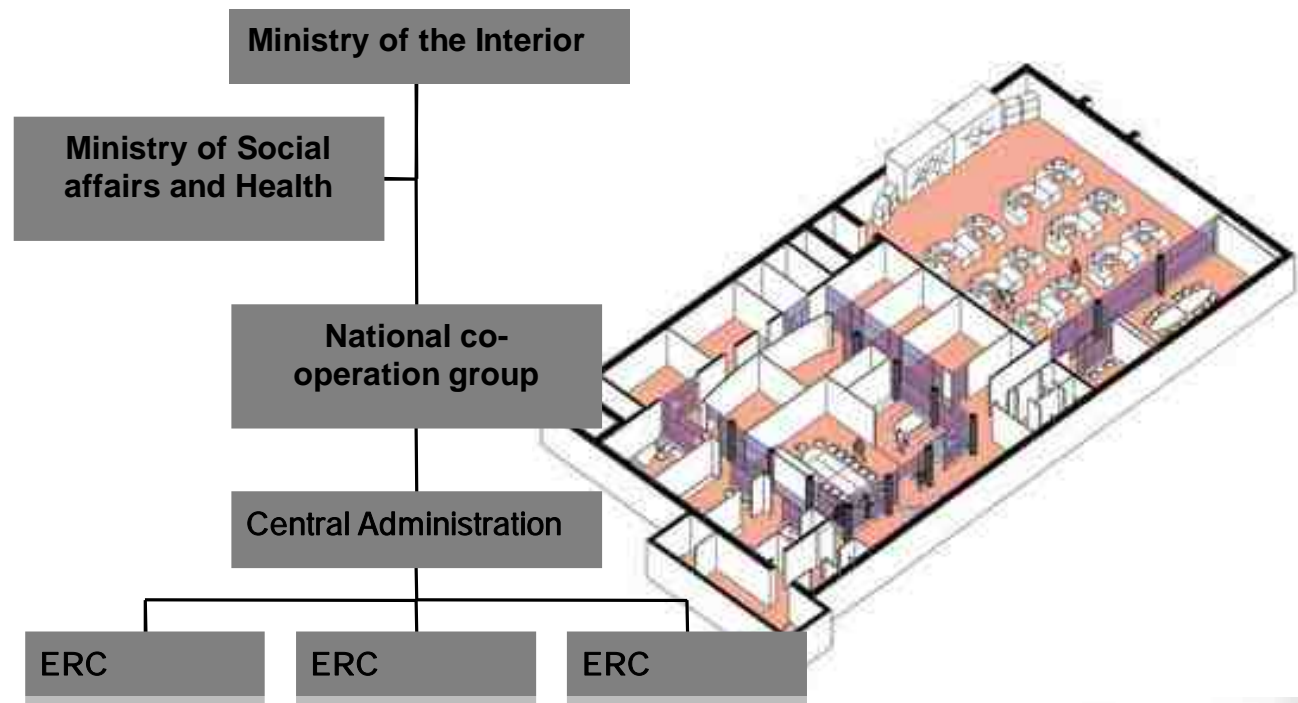
Multi-skilled fire-fighters

- Fire-fighters in Finland are trained as multi-skilled rescuers, also in emergency medical services. Education to become a qualified fire-fighter takes 1,5 years



Emergency centres

MINISTRY OF THE INTERIOR
Department for Rescue Services

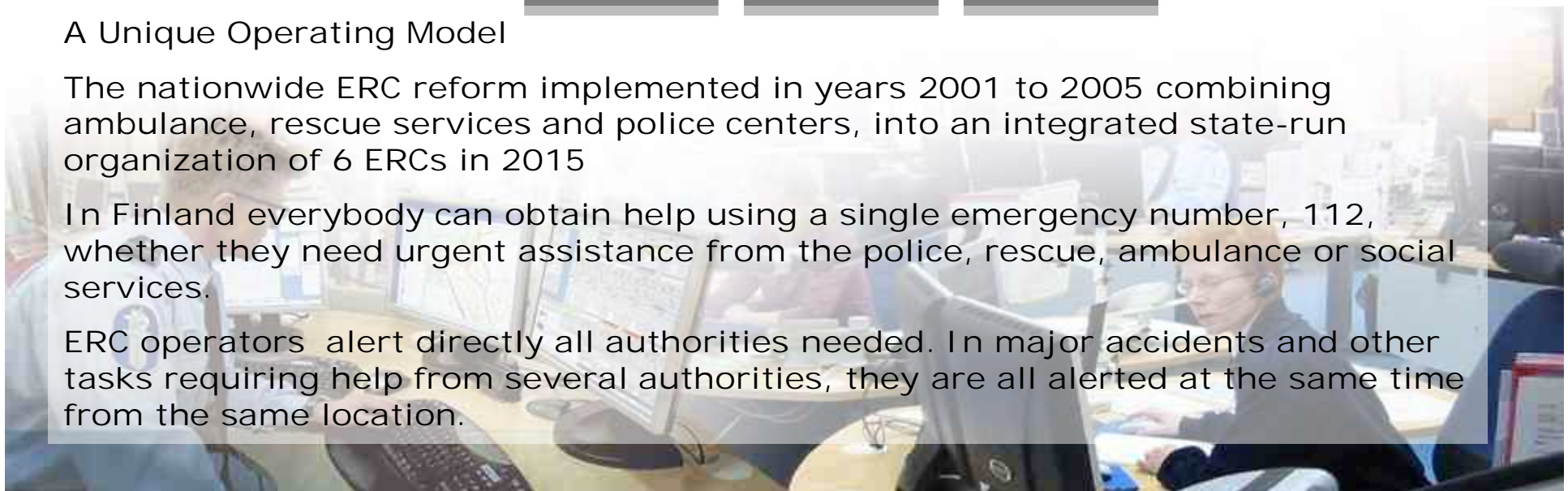


A Unique Operating Model

The nationwide ERC reform implemented in years 2001 to 2005 combining ambulance, rescue services and police centers, into an integrated state-run organization of 6 ERCs in 2015

In Finland everybody can obtain help using a single emergency number, 112, whether they need urgent assistance from the police, rescue, ambulance or social services.

ERC operators alert directly all authorities needed. In major accidents and other tasks requiring help from several authorities, they are all alerted at the same time from the same location.



VIRVE TETRA-Network



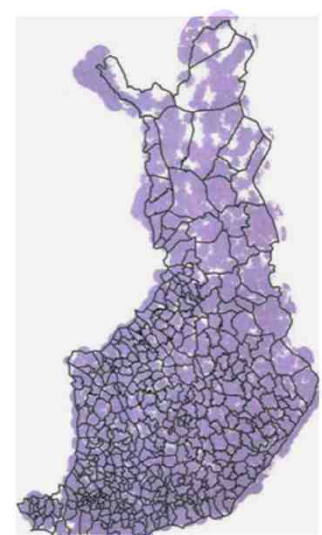
1400
base stations



15
exchanges



32 000
terminals



Nationwide
Coverage

- **Nationwide true multiagency operation by almost 100.000 users**
- **TETRA elements from Cassidian**

Main user groups



Fire and rescue

33%



Police

20%



Defence Forces

15%

- Social and Health Services
- Frontier Guard
- Customs

- Emergency Response Centre
- Security Companies
- Energy Companies



Thank You!

MINISTRY OF THE INTERIOR
Department for Rescue Services



Comments,
Questions?

